

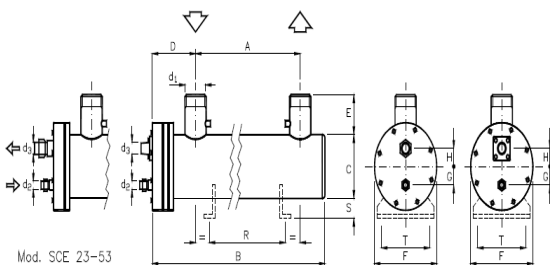
# WATER COOLER SANTRAL 12F



## CAPACITY TABLE

Hour	Water	In	Out
1	1500 Lt	+28°C	+8°C
6	9000 Lt	+28°C	+8°C
12	18000 Lt	+28°C	+8°C
24	36000 Lt	+28°C	+8°C

## UNIT PICTURE



Unit Code	SANTRAL -12
Cooling Capacity	36000watt
Number of Cycles	Only One Cyle
Used Water	Fresh Water
Compressor Type	Semi Hermetic
Comperssor Displacement	42 m3/h
Compressor Brand	Refcomp/Frascold/Dorin
Compressor Power	12 Hp
Compressor Current	18 Amper
Compressor COP	3,43
Compressor Power Input	10,5 Kw
Evaporator Type	Shell and tube
Evaporation Temp.	+2°C / +5°C
Evaporatör Pump Power	1,5 Hp/1,1Kw
Evaporatör Pump Voltage/Amp.	380V/2,6A.
Evaporatör Pump Water Flow	9,6m3/h
Evaporatör Water in/Out	2 1/2"-2 1/2"
Condanser type	Air flow
Condenser Surface	174m2
Condenser Air Flow	36000 m3/h
Condenser Fans Voltage / Amp	380V-3,5A. 4x500
Refrigerant	R-404a
Total Unit Weight	1000kg
Noise (within 3m)	~78 dBA
Electric Board	Include(Schneider)
Unit Voltage	380V / 50Hz / 3Ph